

Community Newsletter

PO Box 50, Lake Grace WA 6353 Ph: (08) 9890 2500 Fax: (08) 9890 2599 Email: shire@lakegrace.wa.gov.au



From the CEO

Several councillors, Craig and myself undertook a field trip around the shire two weeks ago to check out the roads requiring major works or upgrades. Several roads were identified as requiring some major works as they form part of a school bus route and child safety is a major concern. Works on those roads will be programmed to commence as soon as possible. It was evident that there are many other roads requiring attention and they will be attended to in due course.

With winter sports ramping up in a few weeks we wish all teams in our towns the best of luck for the coming season. The ovals are all looking good and there should be no excuses.

The facilities at the sports grounds are of a high quality and they are a credit to the communities who take pride in the presentation. It is disturbing to note that in recent weeks some people are not giving them the appreciation that they deserve. Lights are being left on, doors are being left unlocked resulting in children running amok unattended inside at all hours of the day and some obscene graffiti has been found. Please if you use the facilities please turn off the lights and lock up after you.

The annual Electors Meeting of the Shire of Lake Grace was held in the Lake King Hall on Wednesday 13 April where the Shire Annual report for the year 2020/21 was received. Unfortunately there was only one member of the public present which is a bit disappointing as we rotate these annual meetings around the towns to give everyone the chance to attend. Maybe next year will be a better response in Newdegate.

Alan George
Chief Executive Officer



Community Funding Request 2022 / 2023

This program provides the community with the opportunity to apply for funding for projects and events.

Applications will be considered in conjunction with the Shire's 2022/23 Annual Budget.

Closes 29 April 2022

Funding guidelines and application forms are available on the Shire Website

shire@lakegrace.wa.gov.au

Coming Events

Varley Social Nights

Friday 10 June
Friday 24 June

Creative Kids

Wednesday 20 April
Friday 22 April

ANZAC Day

Monday 25 April
Lake Grace
Newdegate
Lake King
Varley

Ordinary Council Meeting

An Ordinary Council Meeting will be held on
Wednesday
27 April 2022
from 3.30pm at the
Council Chambers,
Administration Building.

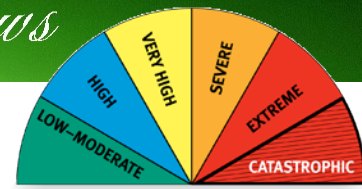
The Agenda will be available on

www.lakegrace.wa.gov.au

Everyone Welcome

A minimum of 15 minutes is set aside for public question time, giving members of the public an opportunity to ask questions relating to Shire activities.

Community Emergency Service News



With seeding underway and the restricted burning period coming to an end it looks like we have a decreasing hazard of fires. On behalf of the Shire, I would like to thank you all for your support to the Shire and one another over summer with fire response. We were blessed with a reasonably quiet year, with the exception of the few days attending to the incidents around the Newdegate area from the storm that blew through. As we move into the cooler months we will be working to deliver training to meet the newly agreed Bush Fire Training Program for the Shire of Lake Grace. This training is to firstly bring benefit to our community by teaching some ways we can work better together, while meeting our obligations under the new Work Health and Safety Act 2020 that has recently come into effect.

The registrations for farm responders in the Newdegate North and South areas are very much below where they should be with numbers of 9 and 14 respectively. Please reach out to the Shire or me directly for a membership application form, so we can get you registered on our Rural Fire Awareness training course and send you notifications when there are reported fires nearby.

Thanks

Matt Castaldini

Community Emergency Services Manager

Oximeters

The State Health Department is offering free pulse oximeters to vulnerable members of the community.

A pulse oximeter is a small peg-like device that clips onto your finger to read your heart rate and blood oxygen level.

The Department of Health WA has supplied Oximeters to distribute to community members who fit within the following categories:

- **50+ years (aboriginal descent)**
- **60+ years**
- **Pregnant**

Only collect if you are well and have not tested positive for COVID-19. If you have received a positive COVID-19 test result, the Department of Health will contact you and provide further information.

If you are eligible you can pick one up from the Lake Grace Hospital administration office, or call 9890 2222.

One per household is available.



Facility Hire

Please contact the Shire to book Shire facilities.

You are required to read the COVID Safety Plan before using the facility.

People, groups, clubs who hire public buildings are still required to:

- Complete the WA Government Safety Plan
- Register users of the facility
- Monitor entry and exits
- Disinfect surfaces, doors handles, table chairs, showers, toilets regularly.

At the end of the event the requirements are:

- Return tables and chairs to designated storage area
- Put all rubbish into the outside sulo bins provided, including rubbish in toilets
- Ensure all stoves and lights are turned off
- Report any damages incurred while hiring facility
- Facility to be left in the same condition as found upon arrival including the floors
- All external doors are closed and locked;

This is most important as often doors are not locked when cleaners arrive.

Shire cleaners are responsible for the general cleaning of a facility, however they are not responsible for cleaning up and putting away tables and chairs after a function.

Community Infrastructure Service

Last week we hosted a Traffic Management Course for our Infrastructure Crew. It was a three day course for all those that were new to Traffic Management and we also held a one day re-accreditation course for our existing staff who already held this qualification.

This course provides participants with the theory and practical skills to implement traffic management and control traffic for work on roads. The course covers a high level overview of traffic management concepts including: -

- Traffic Theory
- Transport Study & Analysis Methods
- Network Management Strategies
- Intersections, Interchanges & Crossing Management
- Local Street Management
- Transport Control
- Implementation of Traffic Management Plans
- Control Traffic with Stop-Slow Bat

I am pleased to say that all of our participants passed with flying colours. Congratulations!

Our staff carried out the following works:

Roadworks

The Lake Grace Maintenance Grader has carried out grading on:

- Fourteen Mile Rd
- Dykes Rd
- Kennedy Rd
- Lockhart Rd
- Old Ravey Rd
- Mordetta Rd

The Newdegate Maintenance Grader has carried out grading on:

- Magenta Road

The Lake King and Varley Maintenance Grader has carried out grading on:

- Norseman Road
- Baanga Hill Road
- Hatters Hill Road
- Smerdon Road

Parks & Gardens

The Parks and Gardens Crew have carried out the following work:

Lake Grace

- Spraying road verges, Mallie Hill Biddy Buniche
- Removal of fallen tree limbs and dead bushes
- Mow ovals and whipper snipping
- Medical Centre gardening and mulching
- Spraying at airstrip and cemetery

Newdegate

- Check around town
- Weed Skate Park garden
- Put bins out
- Finish marking football ovals
- Water pots in the main street
- Edging Skate Park lawn
- Whipper snipping round pavilion

Lake King

- General town gardening

Varley

The Travel stop is under a big revamp. A new area of paving with the lovely town mosaics incorporated will expand from the toilet area up to the entrance of the travel stop.

The old table and chairs will be replaced and new edging will be installed all around the garden beds.

General maintenance around the town and entrance statements at the cross roads of Varley town. There will be a big tree clean-up until all looks spick and span. Just waiting for it to dry out a little till we mow again.

Buildings

The Building Maintenance Crew have carried out the following work on the following facilities:

- Vacant staff house 5 Banksia
- Vacant staff 36 Bennett St
- Lake Grace Speedway
- Australia Day plaques on sign
- Lake Grace Library
- RSL garden
- Lake Grace pavilion
- Visitor Centre
- Lake King Library
- Varley hall
- Varley pavilion and toilets
- Newdegate Pioneer Park

Operations

- Road signage
- Service loader
- Deliver sand to Day Care
- Deliver drains to Lake King
- Deliver backhoe to Lake King
- Septic's at Lake King
- Walk trail
- Road inspection
- Traffic Management Course

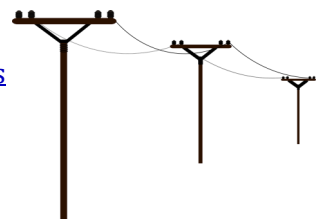
Craig Elefsen

Manager Infrastructure Services

Extended Power Outages

The \$80 payment is an acknowledgement of the inconvenience for customers who have experienced a long unplanned outage while waiting for repairs to be completed and restoration of power to occur.

Go to: <https://www.westernpower.com.au/faults-outages/make-a-claim/extended-outage/>



Community Information

Office Open Hours

Monday - Friday
8.30am - 4.00pm

Staff can be contacted by phone between 8am - 5pm

Licensing Payments

All licensing payments are to be made in person at the Shire of Lake Grace Administration office,
1 Bishop Street, Lake Grace.

Monday to Friday from 8:30am to 4:00pm

As an agency, we process the majority of transactions including: renewals, transfers, number plate orders, boat registration renewals and new licence applications. With every transaction we perform, we try to offer the best service possible.

We do ask all licensing customers to be considerate, even though we are aware of people being 'locals' it does not exempt us from following the rules set by the Department of Transport.

Driving Assessor

The Practical Driving Assessor (PDA) will be at the Shire of Lake Grace Office on:

Friday - Friday 6 May

Friday - Friday 3 June (to be confirmed)

Bookings are essential for all Practical Driver's Licence Assessments and we advise booking in advance as there is often a waiting list.

All bookings to be made at the Shire office on 9890 2500 until further notice.

Lake Grace has one assessment day each month held on the first Friday of the month.

For more information go to: www.transport.wa.gov.au.

Libraries

Lake Grace Public Library School Place Absolon St
Monday - Friday 9am - 5pm
Closed for lunch 12.30 - 1pm

Newdegate Public Library Collier St
Monday - Thursday 8.30am - 4.30pm
Closed for lunch 12noon - 1pm
Friday 9am - 2pm

Lake King Library Newdegate/Ravensthorpe Rd
Tuesday and Thursday 8.30am - 3.30pm

Building Surveyor

Building Surveyor, can be contacted through the Shire Office on 9890 2500 or email shire@lakegrace.wa.gov.au.

Town Planning & Building

The Shire's Town Planner consultant Joe Douglas, can be contacted via the Shire on 9890 2500 or email shire@lakegrace.wa.gov.au.

Environmental Health

The Shire's Environmental Health Officer, Brendon Gerrard. Can be contacted via the Shire on 9890 2500 or email shire@lakegrace.wa.gov.au.

Tip Times

Lake Grace

Monday & Wednesday 9am - 2pm
Saturday & Sunday 9am - 4pm

Newdegate

Wednesday 9am - 1pm
Saturday 9am - 1pm

Lake King and Varley

Open every day

Recycling Services

Household Waste Collection is a weekly service and collected each Tuesday for Lake Grace, Newdegate, Lake King & Varley.

Recycling is a fortnightly service and alternates between Lake Grace and Newdegate. See below for the upcoming recycling collection dates.

Lake Grace	Newdegate
Tuesday 10 May	Tuesday 3 May
Tuesday 24 May	Tuesday 17 May

Please Note: There is no kerbside recycling collection service in Lake King or Varley.

The recycling bins are collected by Warren Blackwood Waste and transported to a recycling facility. If items which are not recyclable are found the content can't be recycled and the load will be directed to the landfill.

If an item is covered in food, it is not recyclable. Food is one of the worst contaminants in the recycling process. By using the yellow top recycling bin correctly you are contributing, in a combined community effort, to reduce the amount of rubbish that is directed to landfill facilities each year.

For more information on Waste Management visit the Shire's website www.lakegrace.wa.gov.au.

Check our Facebook page

<https://www.facebook.com/ShireofLakeGrace/>

