



PO Box 50, Lake Grace WA 6353 Ph: (08) 9890 2500 Fax: (08) 9890 2599

Email: shire@lakegrace.wa.gov.au



CEO's Corner

Flooding Event

The contractors are still working on the bus routes and the worst areas within their sections.

As this work is being carried out, the Shire would like to remind road users to be courteous and slow down within the areas crews are working, this will allow them to do their job in a safe manner and complete it sooner.

For current road closures please refer to the Shire's website www.lakegrace.wa.gov.au or Facebook page for a list of roads that are closed within the Shire.

Newdegate Skate Park

The construction stage will commence next month and target completion date by the end of May 2018. The organisation building the Newdegate Skate Park and All Ages Playground is Nature Play Solutions in partnership with Skate Sculpture. Both are very successful companies in their field, and have won Awards. In addition, a Project Manager, Jeff Riley, has also been appointed.

Road Works

The construction crew is now completing the 4km section left on Holt Rock South Road. The first part of this will be completed by the middle part of February. Magenta Road is being started on Monday 12 February 2018 and sealing to be completed in the first few weeks of March.

The Shire's re-sealing program was expected to start early February to do works in the school zones, this has had to be put back a couple of weeks as we have had some problems getting the repairs completed. The sweeper has come in and completed the town streets of Lake Grace, Lake King and Varley in preparation of the roads being sealed. The sealing is expected to finish within the expected timeframe.

The Lake Grace Maintenance Grader operator is still carrying out works from the flood damaged areas that were not part of the contract, and has completed various roads not affected by the flooding. The operator has completed the school bus routes that have not been affected by the flood.

The Lake King grading contractor has not carried out any works for maintenance grading over the last fortnight. However, he will be doing the following roads in the near future; Old Newdegate Road, Magdahba Track, Milstead Road and the bus route section on Hatters Hill Road.

The Newdegate grading contractor, over the past fortnight has worked on Mount Sheridan Road, Biddy Camm Road (between Holt Rock South Road and North Newdegate Road) and will be looking at grading Rodger Road and Lancing Road in the future.

Parks and Gardens

The town maintenance crew have carried out mowing of lawns, whipper snipping and weeding to the public and open space areas within the Lake Grace town site.

The crew have been helping out in all towns doing various jobs that have come in from customer requests.

Maintenance at the town oval is being carried out, and now having the retic fixed and some much needed rain, the two ovals have bounced back and are in a good condition.

The Shire will be doing some renovations to the ovals in the coming weeks in preparation for the footy and hockey season, with the main oval getting a de-thatch and the hockey oval getting a level and top dress. These works are expected to start the week after the 100th celebration of the cricket association, which will allow the grass to come back in time for the relevant seasons to start.

Building & Maintenance Team

The Building Maintenance Team have been carrying out building/maintenance and work requests at:

- Lake King Hall door
- Lake King Pavilion door (resulting from a break-in)
- Lake Grace Medical Centre
- 14 Blackbutt Way
- 6 Blackbutt Way
- Acoustics at Lake Grace Pavilion - in company with community volunteers

The building team have completed new installations at:

- Newdegate ILUs; entrance signage and name plaques for the four units. The names selected are Grevillea, Acacia, Hakea and Melaleuca.
- New shade shelter at Newdegate Adult Gym.

Denise Gobbart
Chief Executive Officer

Ordinary Council Meeting

The next Ordinary Council Meeting will be held:

28 February 2018
3:00 pm Wednesday
Location: Council Chambers
1 Bishop St Lake Grace

Members of the public welcome.

A minimum of 15 minutes is set aside for public questions time, giving members of the public an opportunity to ask questions relating to Shire activities.

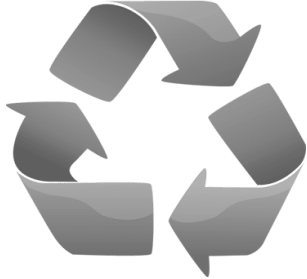
Restricted Burning Period

We are now in the Restricted Burning Period

1 February - 30 April (all dates inclusive)

Permits to burn are required for all burning during this period.

Permits can be obtained by contacting one of the Shire's Fire Control Officer.



What's Recyclable What's Not!



What's Recyclable:



- * Plastic bottles
- * Newspaper
- * Cardboard (clean)
- * Paper Grocery bags
- * Egg Cartons
- * Magazines, junk mail, stationery and envelopes
- * Glass bottles and jars
- * Milk & Juice cartons
- * Aluminium/tin cans, foil, trays
- * All plastic food containers
- * Empty aluminium aerosol cans

What's Not:



- * Plastic wrap
- * Plastic bags
- * Styrofoam (including disposable coffee cups)
- * Paper towels, napkins, tissue paper
- * Paper plates, soiled paper
- * Fast food wrappers
- * Food waste
- * Cups, plates, wine and drinking glasses
- * Light bulbs
- * Batteries
- * Green Waste

Recycling Services

Recycling bins are collected by Warren Blackwood Waste and transported to a recycling facility.

If items which are not recyclable are found the content can't be recycled and the load will be directed to landfill.

If an item is covered in food, it is not recyclable. Food is one of the worst contaminants in the recycling process. Please remember to rinse out cups, cans, jars etc. before throwing them in the bin.

By using the yellow top recycling bin correctly you are contributing, in a combined community effort, to reduce the amount of rubbish that is directed to landfill facilities each year.

Recycling at our Local Tip Sites

If you are located where the recycling service does not extend, e.g. on a farm, you are still able to help the environment and recycle.

Located at our tip sites are designated bins for recyclable material, including bottles, cans and cardboard. These bins are collected and transported to a recycling depot.



Office Opening Hours

Monday - Tuesday - Wednesday - Friday
8.30am - 4.30pm

Thursday 8.30am- 4.00pm
Staff can be contacted by phone between 8am - 5pm.

Transport & Licensing

All licensing payments are to be made in person at the Shire of Lake Grace Administration building.

Monday, Tuesday and Wednesday 8.30am - 4.15pm

Thursday and Friday 8.30am - 4.00pm

As an agency we process the majority of transactions, including; renewals, transfers, number plate orders, boat registration renewals and new license applications.

Please ensure you arrive at the counter with sufficient time for your transaction to be completed by closing time, this is because it is necessary for staff to reconcile Department of Transport transactions each day. Please keep in mind that farm equipment and Learners Permit transactions can take up to 45 minutes or more.

Driving Assessor

The Practical Driving Assessor (PDA) will be at the Shire of Lake Grace Office on:

Friday - 2 March 2018

Friday - 6 April 2018 (to be confirmed)

Bookings are essential for all Practical Driver's Licence Assessments and we advise that there is a waiting list, so booking in advance is highly recommended.

Lake Grace has one assessment day each month held on the first Friday of the month.

For more information visit www.transport.wa.gov.au.

Firearm Licence

All firearm licensing including the payment of licence renewals is now done at the Lake Grace Post Office.

Building Surveyor

Shire Building Surveyor, Josiah Farrell will be available at the Shire Office on the following dates:

Tuesday 6 February 2018

Tuesday 20 February 2018

For an appointment contact Josiah on 0438 811 944.

Environmental Health Officer

For an appointment with the Shire's Environmental Health Officer, Will Pearce, please contact the Shire on 9890 2500 or email shire@lakegrace.wa.gov.au.

Tip Opening Hours

Lake Grace

Monday & Wednesday 9am - 2pm

Saturday & Sunday 9am - 4pm

Newdegate

Wednesday 9am - 1pm

Saturday 9am - 1pm

Lake King & Varley

Open Every Day

Waste & Recycling Pick up

Household Waste Collection is a weekly service and collected each Monday for Lake Grace, Newdegate, Lake King & Varley.

Recycling is a fortnightly service and alternates between Lake Grace & Newdegate. See below for the upcoming recycling collection dates.

Lake Grace	Newdegate
19 February 2018	26 February 2018
5 March 2018	12 March 2018

Please Note: There is no kerbside recycling collection service in Lake King or Varley.

For more information on Waste Management visit the Shire's website.

Library Hours

Lake Grace Public Library

School Place Absolon St

Monday - Thursday 9am - 5pm

Closed for lunch 12.30 - 1pm

School Holidays

Tuesday & Thursday 9am - 5pm Lunch 12.30 - 1pm

Newdegate Public Library

Collier St

Monday - Thursday 8.30am - 4.30pm

Closed for lunch 12noon - 1pm

Friday 9am - 2pm

Lake King Library

Newdegate/Ravensthorpe Rd

Tuesday and Thursday 8.30am - 3.30pm

Everyone welcome



Check out our Facebook page



Check out our website
www.lakegrace.wa.gov.au

Free Welding Workshop

Lake Grace Engineering in Collaboration with the Lake Grace Men's Shed will hold a Welding Workshop

Saturday 10 March 2018

At Lake Grace Engineering
Lot 286 Absolon Street Lake Grace

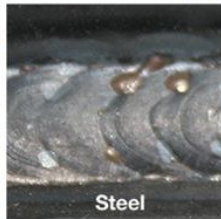
Start 9am - 12noon

Open to Lake Grace Men's Shed members and general public
Maximum of 20 - 25 people, will be working in groups of 4
Instructed by Lake Grace Engineering, Clint Earnshaw and staff
Metal will be supplied by Lake Grace Engineering

Instructions will be on:

- * Mig welding - very thin to heavy gauge
- * Setting up the welder correctly
- * Welding pipes together
- * Aluminum welding
- * Cast Iron welding
- * Plasma cutting
- * Tig welding
- * Silver Soldering

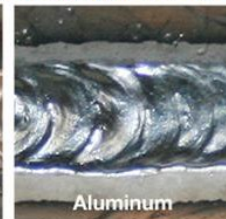
Shared BBQ lunch will follow



Steel



Silicon-Bronze



Aluminum



Government of Western Australia
Department of Local Government and Communities



West Arthur
Community Resource Centre