



Prepared by Shannon Gobell
Consultant to Measure Up! 2007

LAKE KING PIONEER MEMORIAL HALL

Lake King-Newdegate Road
LAKE KING WA 6356
Queries and bookings to Erika Meijbaum
c/- Post Office, Lake King
Ph: 08 9874 4004
Fax: 08 9874 4005
Email: erika.meijbaum@landmark.com.au

LOCAL GOVERNMENT

Shire of Lake Grace
1 Bishop Street
LAKE GRACE WA 6353

PO Box 50
LAKE GRACE WA 6353

Ph: 08 9890 2500
Fax: 08 9890 2599
Email: shire@lakegrace.wa.gov.au

CITY/TOWN DESCRIPTION

Lake King is named for the major feature of the area, Lake King, and is located five and a half hours' drive east of Perth and 67 kms north-west of Ravensthorpe. Lake King is ideally situated as a stopover for travellers crossing arid country between Perth, Esperance and the Nullarbor Plain. Lake King is home to only a very small community, with a population of 219 people within Lake King and the surrounding area. The nearest towns are Lake Grace - 113kms west or Ravensthorpe - 73kms south/south east.

Lake King is a major grain growing region, the main crops being wheat, canola, barley and lupins. Cattle and sheep are also raised, the cattle for meat and the sheep for both meat and wool. The town marks the point where a formed gravel road takes a shortcut across immense inland sand flats to Norseman, and although there are no services for over 300 kilometres, it does pass through the interesting arid wilderness contained by Frank Hahn National Park. Lake King is in the middle of salt lake country and is noted for its amazing and spectacular wildflower display each spring, as well as access to the Rabbit Proof Fence and the rock climber's favourite, Peak Charles.

The area's salt lakes form a chain, believed to be the remnants of an ancient river system, formed during the early tertiary period (some 60 million years ago), when the climate was supposedly wetter than it is at present. The area has a temperate climate, with cool evenings and an average annual rainfall of 340 mm.

EXTERIOR PHOTOS



3D View of front of venue



Main Entry Doors to Venue



*Side of Venue (Load in Truck Access)
(& plenty of truck/bus/company parking)*



Rear of Venue



Side of venue including playground area



*Load in access at side of venue
(through double doors)*

GENERAL DESCRIPTION

The Lake King Pioneer Memorial Hall is a very small but neat little town hall and is very well looked after and presented. The venue appears to have been initially built in about the late 70's or early 80's but there has been a refurbishment since then in 2001 which saw a supper room, kitchen, foyer, offices and new toilets all added to the existing hall. As mentioned the venue is very well presented and well maintained and is used for more community social activities rather than strictly performing arts, like Aerobics. The school, being just next door, tend to use the space for various activities on a regular basis too.

The venue itself consists of the main hall, kitchen, supper room area off the side of the main hall, bar, foyer, toilets, toy library, health clinic room and a play ground is attached to the side of the venue.

The venue is licensed to hold 168 people in the main hall and an additional 72 people in the supper room. The venue is also fully disability compliant to the BCA with the renovations in 2001 bringing it up to spec. Whilst the supper room and foyer do have air-conditioning the main hall has to suffice with a few ceiling fans and hence I suspect the space can get quite hot in summer.

The venue has a good suite of furniture available including; 3 x table trolleys, 3 x 6' trestle tables, 11 x 5' round function tables, 6 x small children's tables, 116 x charcoal grey padded chairs, 35 x brown plastic chairs, 25 x olive green plastic chairs, 13 x bright green plastic chairs, 2 x chair trolleys and 2 x display panels.

The floor in the main hall is wooden and is in excellent condition, although it also has a sports court marked out on it as well. The stage is also wooden and in very good condition. The stage has carpet taped down on it in a temporary fashion and this could be removed easily if needed.

The acoustics in the venue are quite acceptable, with a small reverb in the room that may well on the whole disappear once the hall is full of people. As with many regional town hall venues this hall does not have a proper blackout system, but this could be achieved with a large ladder and some black material. The venue does have Venetian blinds on the windows but as you would expect these do not act as a suitable blackout for the space.

The venue has both male and female toilets suitable in size to match the venue's capacity and a disability toilet is also available.

There is minimal lighting in the venue but there is enough to have a small even white wash on stage. The lighting that is in the venue, whilst not the most modern, is in very good condition and quite serviceable. In fact the Strand Patt 223 lighting fixtures would have been in the best condition for their age fixtures I have ever seen. The lighting desk was interesting though and appears to have been bought from an old TV studio outfit and certainly does not suit an entertainment type venue as the Lx desk can only be used with the matching dimmer racks given it does not work on a DMX512 or typical lighting analogue system. It is unique and special adaptors are needed to patch into the dimmer rack. There is no audio equipment in the venue.

Venue load in is via a paved pathway through the venues side exit doors, this brings you into the middle of the auditorium floor. It's a flat load in with no stairs. There is some entertainment power available in the form of 1 x 32amp 5pin 3phase outlet on stage in prompt corner. There are very few single phase GPO's around the stage area or venue.

TOURING TIPS

- Tour all your own technical equipment (lighting, audio, etc). There is some minimal lighting gear, but if you need anything further than a simple white wash on stage then bring the lighting gear with you.
- The ceiling height on stage is very low and hence shows that require some height on stage may get in to trouble quickly.
- Tour all your own event/show staffing including any crew for load in/out.
- There is an 8' ladder in the venue but if you require a black out then you may need to reach a little higher than that to be able to put blacks over the windows and therefore you may need to bring your own larger ladder.
- Bring your own black curtains for blackout purposes, if you require a blackout.
- There is very little accommodation in town and it seems to book out much quicker than I had expected and hence I would recommend that if you require more than about one or two rooms to book reasonably early.
- The venue is used for a multitude of activities on a regular basis and hence if you require clear access for bump in, rehearsals, show and bump out I would be very clear early on what your requirements are so that local community user groups can find an alternative space for the time your in the venue.

As with many regional venues this is the type of venue where you collect the keys (from the local school next door) and are left to your own devices.

INTERIOR PHOTO'S



Lake King Hall - looking towards main entry end of hall (from stage)



Lake King Hall - looking towards stage (from entry)



Stage in Lake King Hall

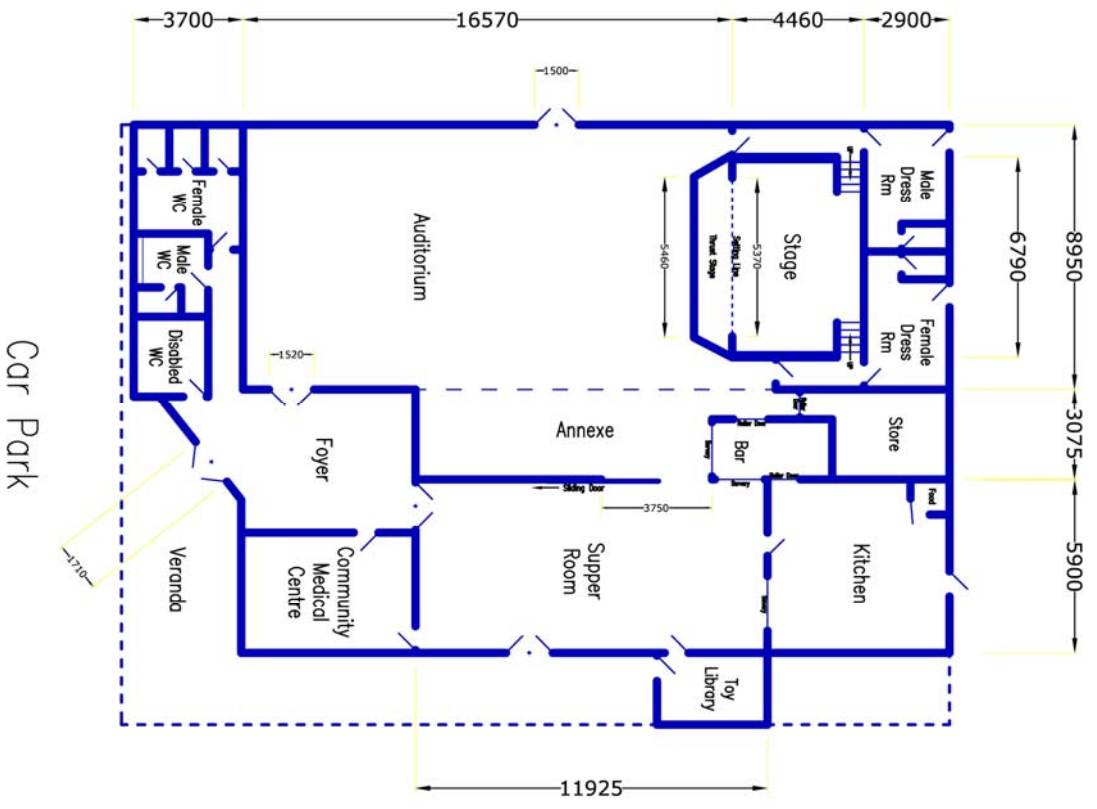


*Supper Room
(main hall on left through walkthrough arch)*

DIMENSIONS - All dimensions in mm

STAGE DEPTH (setting line to back wall)	4460
STAGE WIDTH (inc wings)	6635
STAGE HEIGHT	920
PROMPT WING	632
OPPOSITE PROMPT WING	632
STAGE THRUST (setting line to front of thrust stage or apron)	1300
STAGE FLOOR TO CEILING Centre	4080
Outsides	3200
STAGE FLOOR TO LX BARS (or available rigging points)	3520
PROSCENIUM WIDTH	5370
PROSCENIUM HEIGHT	2980
STAGE TO BORDER HEIGHT	2200
AUDITORIUM DEPTH	15270
AUDITORIUM WIDTH	8950
AUD FLOOR TO CEILING Centre	4890
Outsides	3560
AUD FLOOR TO LX BARS	3860

Lake King Pioneer Memorial Hall

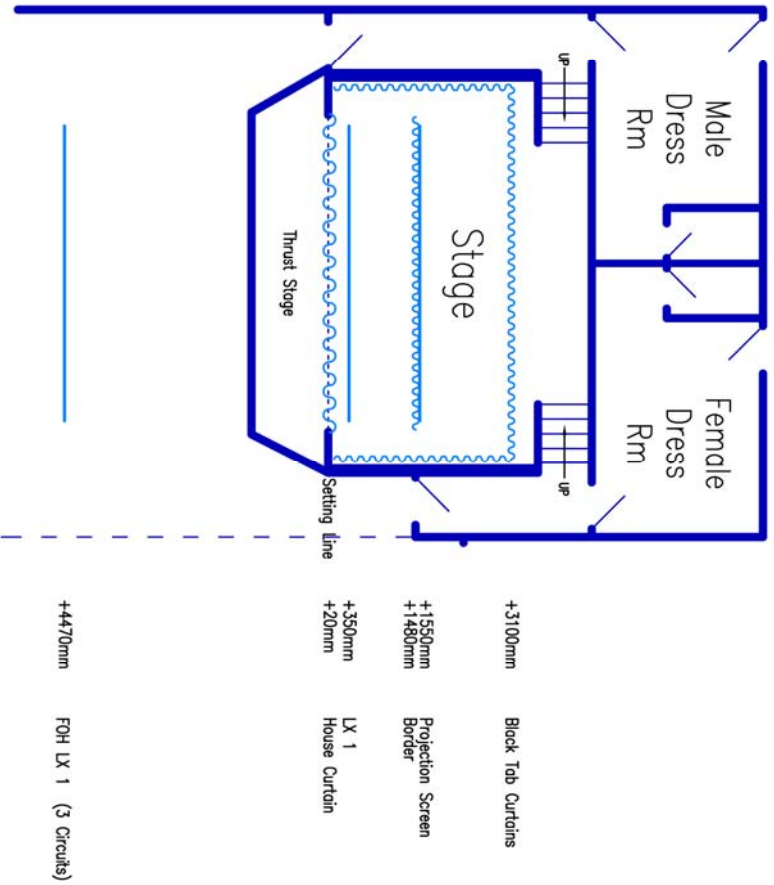


Road



Lake King Pioneer Memorial Hall	
DRAWN BY: Shannon Gobell	CHECKED BY:
DATE: 25/10/07	CITY/TOWN: Lake King
SCALE: 1:200 (on A3)	TITLE: PLAN
DRAWING NO.: 1.0	
Prepared for Country Arts WA	

Lake King Pioneer Memorial Hall Stage Plot



*Please Note: All Lx bars are at fixed heights and all curtains are at fixed heights. No bars fly.
*Please Note: All measurements are in millimetres and are taken from the setting line.



Lake King Pioneer Memorial Hall	
DRAWN BY: Shannon Gobell	CHECKED BY:
DATE: 25/10/07	CITY/TOWN: Stage Plot
SCALE: 1:100 (on A3)	TITLE: PLAN VIEW
DRAWING NO.: 1.1	
Prepared for Country Arts WA	

FLYING FACILITIES & DRAPES

FLYING SYSTEM	No flying system installed
MASKING	No blackout available, although there are Venetian blinds in the theatre windows. No Masking on stage.
FOH CURTAIN	Yes, a marron colour House Curtain is installed on a tab track and operates OK.
LEGS & BORDERS	There is one (1) black border and one (1) set of black curtains on tab tracks at the rear of the stage.
OTHER DRAPES or CURTAINS	1 x white roll up & down projection screen
CYCLORAMA	None

LIGHTING FACILITIES

3 PHASE POWER AND LOCATION	One (1) x 32Amp 5pin 3phase outlet is available in prompt corner on stage.
OPERATING POSITION (S)	Auditorium floor at the back or side of the room.
LIGHTING DESK	1 x Lightmaster Zero88 Lighting Console
DIMMERS AND LOCATION	2 x 6ch Lightmaster Dimmer racks. These are not DMX and can only work with the above Zero88 Lx Console. These racks need adaptor plugs to fit standard 240v Aust plugtops into the racks. Both dimmer racks are wired together to one 30amp 3phase plug top.
WIRED LIGHTING BARS NUMBER OF CIRCUITS AND LOCATIONS	The FOH Lx bar has 3 wired circuits on it. There are no other wired bars or patch circuits available.
PATCHING FACILITIES	As above, 3 circuits come from the FOH Lx bar to prompt corner.
LAMP STOCK	2 x 500w Selecon single cyc floods 2 x 650w Selecon Fresnel's with barndoors 2 x 650w Selecon Medium Zoomspot Profiles 2 x 1000w Strand Patt 223 Fresnel's
ALTERNATIVE ONSTAGE LIGHTING POSITIONS	Apart from the Lx bars marked on the stage plan there are no other alternative lighting positions or even girders to hang truss from.
ALTERNATIVE FRONT LIGHTING POSITIONS	None.
TYPE OF CEILING/ POSSIBLE FIXING POINTS	Masonite or Gyprock ceiling. No obvious fixing points available.
BLACKOUT	No, but could be achieved with some black material. It is quite dim though with the Venetian blinds shut and the big sliding door to the supper room closed.
LADDERS	1 x 8' ladder.
ONSTAGE 10AMP OUTLETS	There are very few 10amp GPO's either on stage or around the venue.
FOH 10AMP OUTLETS	As above.
HOUSELIGHTS	Fluros, with standard light switches. The switches for the house lights are in the foyer.
WORKING LIGHTS	Fluros.

SOUND FACILITIES

OPERATING POSITION (S)	The auditorium floor at the back of room.
SOUND DESK	None
AMPLIFIERS	None
SPEAKERS	None
FOLDBACK	None
FOLDBACK AMPS	None
MICROPHONES	None
MIC STANDS	None
CD OR CASSETTE PLAYERS	None
SENDS	N/A

COMMUNICATIONS

TALK-BACK	None
TELEPHONES	None in venue.
INTERNET	None, but the town has Next G and hence Bigpond wireless modems will work.

ONSTAGE FACILITIES

CROSSOVER	There is a small crossover behind the last black curtain on stage.
WING SPACE	A very small amount of awkward wing space is available. Best to assume there is no wing space though as you would be hardly off stage anyway.
TREADS TO FOH	There is a portable set of step for access from the auditorium floor straight up and onto the thrust stage. Other than this there are two doorways, one either side of stage, that lead to the BOH wing areas and then steps come up in the back corners of the stage.
LADDER	1 x 8' ladder.
ROSTRA	None.
BLUE WORKLIGHT	None fitted.

FRONT OF HOUSE FACILITIES (FOH)

SEATING	There is a licensed capacity of 168 people. There are chairs as follows though; 116 x Charcoal Grey padded Chairs 35 x Brown Plastic Chairs 25 x Olive Green Plastic Chairs 13 x Bright Green Plastic Chairs The padded chairs are in excellent condition.
BOX OFFICE	There is no FOH Box Office facility in the venue.
BAR	Yes, a bar is available in this venue.
KITCHEN	Yes, there is a good size kitchen with a fridge, 2 x large oven/cook top units and microwave and plenty of bench space. The Kitchen is not soundproofed from the venue auditorium all that well.
TOILETS	Male, female and disability toilets are available
AIR CONDITIONING	No, There is no air-conditioning fitted into the main hall but there is reverse air-conditioning in the supper room and foyer. There are a few fans in the main hall.
HEATING	Yes, there is an old and inadequate heating system in the main hall.

BACKSTAGE FACILITIES

GREEN ROOM	No
DRESSING ROOMS	There are two (2) 5/6 person dressing rooms, fitted with lights, benches and mirrors.
TOILETS	Yes, 1 pan in each dressing room
SHOWERS	No
MIRRORS	Yes
LAUNDRY	No
IRONING	No

BUMP-IN ACCESS

ACCESS DESCRIPTION	The best load in for this venue is through the side exit double doors and onto the auditorium floor. The load in is a flat load in from street level straight in to venue's auditorium floor level.
LOADING DOOR SIZE	Double doors at side of venue are 1500mm wide.
EXTERIOR LIGHTING	Various fluros and floods are located on the exterior of the venue.
PARKING	Plenty of parking is available at the front of the building, including plenty of space to move trucks and buses around.
STORAGE	There is no storage space for touring parties to utilise, however it is likely that they would be pushed to a corner of the supper room space.

EMERGENCY SYSTEMS

SMOKE ALARMS	No smoke alarms or fire alarm systems are fitted.
SPRINKLER SYSTEMS	None
FIRE EXTINGUISHERS	Yes, various extinguishers as per modern BCA requirements are fitted.
FIRE HOSES	None
EMERGENCY EXITS	There are three emergency exits for the venue, including the main entrance.
EXIT SIGNS	Exit signs are fitted to all emergency doors.
MEDICAL CONTACT	There is no nominated medical contact for the venue. Please see medical contacts below.

PRE-SALES

TICKETING SYSTEM	Tickets sold through local shop outlets, Council will assist in identifying ticket sales outlets.
ADVERTISING POSITIONS	None at venue, but a banner could be hung on an adjacent fence line.
POSTERS/BANNERS	As above. Posters could be placed into the venue windows.
LOCAL PUBLICATIONS	The Lakes Links news covers Lake King and surrounding areas.
LOCAL RADIO	Radio WAFM 6FMS (92.5fm) transmits in the Lake King area. For further information on radio stations in the area please refer to the following websites: http://www.ausradiostations.com/fmwa.html http://www.ausradiostations.com/amwa.html
WORD OF MOUTH	Word of mouth is a positive way to publicise something in Lake King and providing media releases to council and a number of key businesses (i.e. the pub) would certainly spread the word.

OTHER IMPORTANT CONTACTS

HOSPITAL/DOCTOR	There did not appear to be any medical facilities in Lake King. Lake Grace provides the closest facilities.
PHARMACY	There is no chemist available in Lake King.
HARDWARE	There is no hardware store in Lake King.
COUNCIL	Shire of Lake Grace - Shire Office: 08 9890 2500
POLICE, FIRE, AMBULANCE	For all emergency services contact: 000 Local police can also be contacted at Lake Grace on 08 9865 1007 or Ravensthorpe on 08 9838 1004
TAXI	No taxi service available
NEWSAGENT	Newspapers and basic stationary are available at the corner store; other newsagency supplies are limited but could be sourced from nearby Lake Grace or Ravensthorpe.
VISITOR CENTRE	The Visitor Centre is located within the Shire Council offices of Lake Grace, the contact number is: 08 9890 2500
ACCOMODATION	There is a limited amount of accommodation in Lake King and as such only a small amount of persons could be accommodated. There are a number of accommodation options in nearby Lake Grace or Ravensthorpe. I would suggest either; Lake King Tavern: 08 9874 4048 Lakes Break Bed & Breakfast: 08 9874 4007